

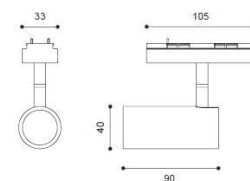
SLIMDUET-S



Product specification

INTERIOR TRACK SYSTEM

Installation	System light
Cut out	-
Dimension	D=Ø40 L=90



MUST INSTALLED ON SLIMDUET TRACKS

Technical description

Article number	1617.407
LED Consumption	6.4W
Lumen	542lm
Voltage	48V DC
Beam Angle	10°/20°
CCT	3000K
CRI	90+
Driver	-

Technical character	
Insulation	CLASS II
Protection	IP 20
Tilt	90°
Rotate	0~355°
Operating temperature	-20~40°C
Average Failure Time	L70(10k) >50000 (h)

Materials	
Luminaire	extruded aluminum body
Baffle	ABS
Reflector	plastic-PC
Heat sink	extruded aluminum body
Baffle available color	black/white
Body available color	black

Package

inner box	-	mm 1 kg
outer box	-	mm 0 kg / 0 in 1

Photometric**Accessories**

None

Remarks

*1. LUMEN : for LED chip test result based on Tc=85°C.

This is the ideal (Maximum) lumen. This lumen information is from the LED supplier

*3. LUMEN(Øsystem) (Total FLUX) : this lumen is from luminaire with heat sink, reflector and fixture, this is the real lumen with the loss because of different design of reflectors and fixtures.