

LOTUS SERIES (AM)



LOTUS (AM)

The conical-shaped design of the LOTUS fixtures and its deeper placed light source make sure that glare is reduced to a minimum . LOTUS has 4 different beam angles to choose from and can be fixed or adjustable . The small trim gives a refined touch to this elegant luminaire.

Material: Aluminum forging heatsink with anodized black finish, aluminum die casting trim with powder coating finish.

Application: Residential, shopping mall, shop, hotel room, restaurant & bar, museum,art gallery, showroom, office.

Shape
(Baffle Size)



Round
3.4"

Mountings



Recessed
Trim

Light distributions



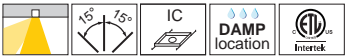
Adjustable

LOTUS round
 Adjustable

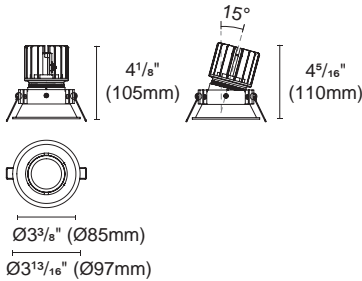



Article number	2118.523-LEA-01
LED Consumption	8W
Current	200 (mA)
Lumen	756 (lm)
Beam Angle	15°/24°/36°/50° (Lens)
CCT	3000K
CRI	90+
Driver Model	PUP10A-1WMC-350

Bezel :  
 Black White

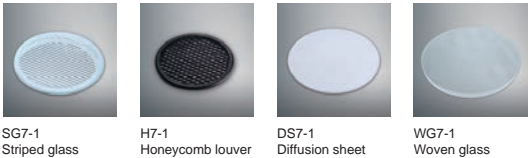


Dimmable



 Cut out : 3 17/32" (90mm)

Accessories



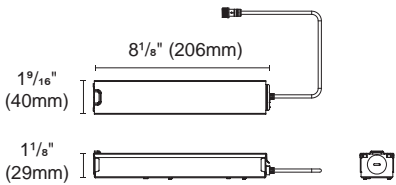
SG7-1 Striped glass H7-1 Honeycomb louver DS7-1 Diffusion sheet WG7-1 Woven glass



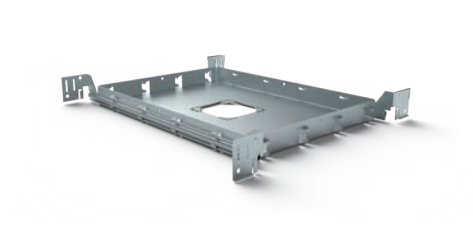
INSTALLATION OPTIONS



ACCG-28B-PUP10A-1WMC-350 0/1-10V
ACCG-28B-PUP10D-1WMC-350 DALI
ACCG-28B-PUP10T-1LMC-350 TRIAC
Type: Gear box



Internal space dimension:
L $4\frac{1}{4}"$ (108mm) X W $1\frac{3}{8}"$ (35mm) X H $1"$ (26mm)



ACCH-12-R90
Type: New construction plate

